



Hariom Foundryman Enterprise

FOUNDERS, FABRICATORS & MACHENICAL ENGINEERS
SPECIALISTS IN BOILER SPARES

Our Sister Concern

Hariom Sahara Engineers Pvt. Ltd.

Precision Engineering Industries

Onkar Industries

Shambhu Nath Jha (HUF)



OFFICE :- 42/10, 'X' ROAD, BELGACHIA, HOWRAH-711108(W.B.)

FACTORY:- 82/1, 'O' ROAD, BELGACHIA, HOWRAH-711108(W.B.), INDIA

TELE-FAX NO. 033-2651-3662, MOBILE NO. 09748924404, PH. NO. 033-2651 1674

Email :- hariomfoundry@yahoo.com & snjha111@hotmail.com.

VISIT US AT www.hariomfoundry.com

ISO-9001 : 2008 CERTIFIED COMPANY



Company Profile

HARIOM FOUNDRYMAN ENTERPRISE

FOUNDERS, FABRICATORS & MACHENICAL ENGINEERS

SPECIALISTS IN :- BOILER SPARES

OFFICE :- 42/10, 'X' ROAD, BELGACHIA, HOWRAH-711108(W.B.)

FACTORY:- 82/1, 'O' ROAD, BELGACHIA, HOWRAH-711108(W.B.)

TELE-FAX NO. 033-2651-3662, MOBILE NO. 09748924404, PH. NO. 033-26511674

Email :- hariomfoundry@yahoo.com & snjha111@hotmail.com.

VISIT US AT www.hariomfoundry.com

SUB:- SUPPLY OF BOILER SPARES & GENERAL ENGINEERING ITEMS.

DEAR SIRs,

THIS IS TO INTRODUCE OURSELVES AS ONE OF THE LEADING MANUFACTURER OF VARIOUS BOILER SPARES INCLUDING DIFFERENT GENERAL ENGINEERING ITEMS FOR THE COUNTRY AS WELL AS ABROAD.

WE ARE CATERING TO THE REQUIREMENT OF OUR VALUED CUSTOMERS WITH OUR PRODUCTS (COPY ATTACHED) MOSTLY USED IN SUGAR INDUSTRIES, CEMENT MILL, CHEMICAL PLANT AND POWER PLANT FOR THEIR VARIOUS PROJECTS IN INDIA AND ABROAD WITH OUR BETTER PERFORMANCE.

WE ARE SURE THAT YOU ALSO MUST HAVE BEEN PROCURING NUMEROUS SUCH ITEMS FROM DIFFERENT OUTSIDE SOURCES FOR YOUR PROJECTS. IN VIEW OF THIS AND BEING DESIROUS OF CATERING TO YOUR NEEDS MAY WE REQUEST YOU TO ARRANGE FOR ENLISTING US ONE OF YOUR VENDORS AND FAVOUR US WITH SUITABLE ENQUIRIES WHICH WE ASSURE WOULD BE RECEIVING OUR IMMEDIATE ATTENTION.

SHOULD YOU, HOWEVER, REQUIRE ANY OTHER INFORMATION, PLEASE LET US KNOW AND WE SHALL IMMEDIATELY AT YOUR SERVICE.

THANKING YOU AND ASSURING OF OUR BEST SERVICES AT ALL TIMES. WE NOW LOOK FORWARD TO RECEIVING YOUR FURTHER INSTRUCTIONS.

***YOUR'S FAITHFULLY,
FOR HARIOM FOUNDRYMAN ENTERPRISE.***

(S. N. JHA).

OUR MAIN PRODUCTS

- | | |
|--------------------------|-------------------------------------|
| 1. GRIT REFIRING SYSTEM. | 15. SCREW COUPLING |
| 2. SLIDING GATES | 16. TEMPLATES |
| 3. SEAL PLATES | 17. GIRDERS |
| 4. RACK AND PENION GATE | 18. STIRRUP ASSLY. |
| 5. FOUNDATION BOLTS | 19. LOADING UNIT |
| 6. STRUCTURES | 20. C.I. DOORS |
| 7. PIPE SUPPORTS | 21. LEAD SCREW |
| 8. HEADER SUPPORTS | 22. SILENT BLOCK |
| 9. DAMPERS | 23. THRUST PLATE |
| 10. IDLER SHAFT | 24. CAM SHAFT |
| 11. SPROCKETS | 25. COOLING SEALING ASSEMBLY |
| 12. DRIVE SHAFT | 26. SEAL & COVER PLATE |
| 13. DRIVEN SHAFT | 27. CHUTES FOR BUNKER (S.S. & M.S.) |
| 14. FEED ROLL ASSLY. | 28. MECHANICAL SPREADER |
| | 29. ALL TYPES OF STOKER SPARES. |

NOTE :- OUR ALL ABOVE PRODUCTS ARE MANUFACTURED FROM HIGH QUALITY INDIAN STANDARD RAW-MATERIALS

LIST OF PLANT AND MACHINERIES:-

- | | |
|--|---------|
| 1. LATHE MACHINE 24 FEET | 01 NO. |
| 2. LATHE MACHINE NORTON TYPE | 01 NO. |
| 3. LATHE MACHINE 10 FEET | 01 NO. |
| 4. SHAPING MACHINE 26 X 32 | 01 NO. |
| 5. MILLING WITH HORIZONTAL ATTACHEMENT | 01 NO. |
| 6. RADIAL DRILL MACHINE 3" CAPACITY | 01 NO. |
| 7. RADIAL DRILL MACHINE 2" CAPACITY | 01 NO. |
| 8. RADIAL DRILL MACHINE 105" CAPICITY | 01 NO. |
| 9. STATE DRILL MACHINE | 02 NOS. |
| 10. GRINDING MACHINE | 01 NO. |
| 11. HAND GRINDING MACHINE | 15 NOS. |
| 12. HAND DRILL MACHINE | 03 NOS. |
| 13. MIG WELDING MACHINE | 03 NOS. |
| 14. PLATE BENDING MACHINE | 01 NO. |
| 15. BALL PRESS MACHINE | 01 NO. |
| 16. GAS CUTTER ARRANGEMENT | 06 SET. |
| 17. LINE CUTTER ARRANGEMENT | 02 NOS. |

LIST OF MEASURING INSTRUMENTS

1.VERNIER	24"	01 NO.
2.VERNIER	12"	03 NOS.
3.VERNIER	6"	02 NOS.
4.MICRO METRE	0 – 25MM	01 NO.
5.MICRO METRE	25 – 50 MM	01 NO.
6. MICRO METRE	50 – 75 MM	01 NO.
7.MICRO METRE	75 – 100 MM	01 NO.
8.MICRO METRE	100 – 125 MM	01 NO.
9.MICRO METRE	125 – 150 MM	01 NO.
10. BORE DIAL	0 – 150 MM	01 NO.
11.DIAL INDICATOR		01 NO.
12.HEIGHT GUAGE		01 NO.
13. POLDI		01 NO.
14.DFT COAT METRE		01 NO.
15. MEASURING TAPE		10 NOS.
16.SCALE		10 NOS.
17. WATER LAVEL		02 NOS.
18. D METRE		01 NO.
19. LIFTING CRANE	10 M.T. CAP.	01 NO
20.LIFTING CRANE	5 M.T. CAP.	01 NO.
21.LIFTING CRANE	2 M.T. CAP.	01 NO.

OUR VAT NO. 19711382029

C.S.T.NO. 19711382223

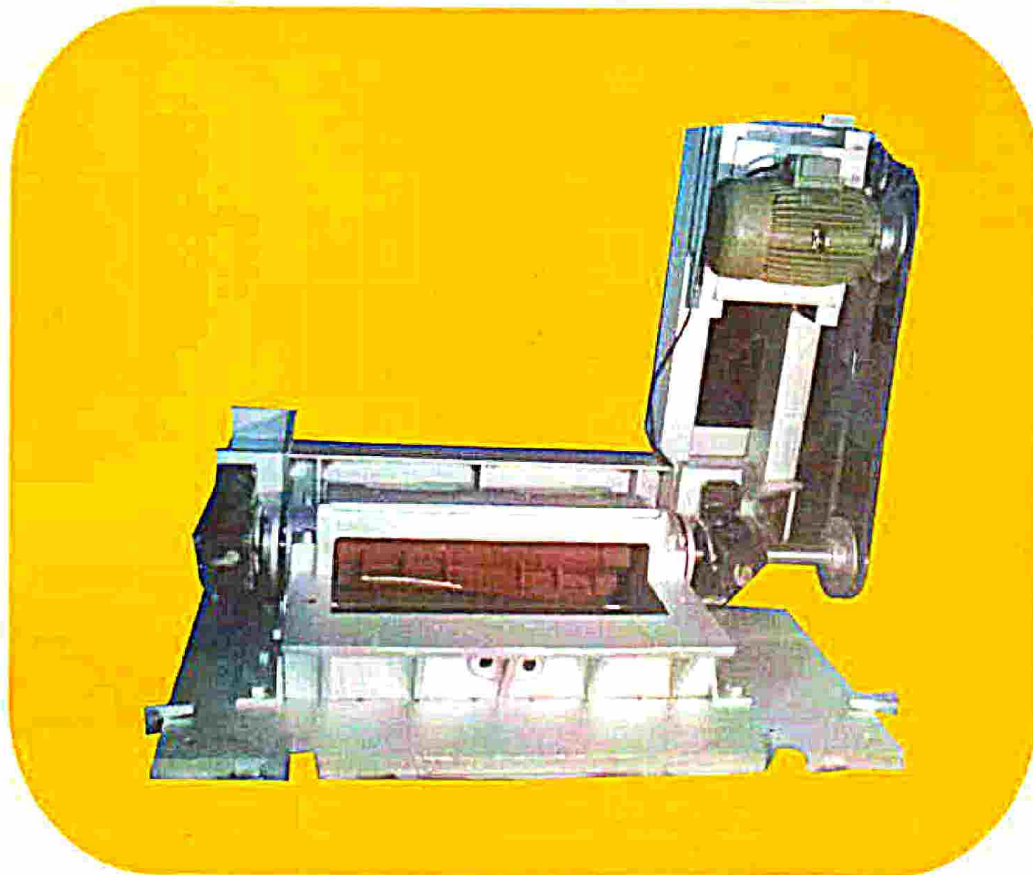
ECC NO. AEPPJ9943LXM001

PMT.SSI.REGN.NO. 210917233 DT. 22.09.2005.

NSIC REGN.NO.NSIC TSC/HOW/GP/REGN/98/07-08 DT. 29.01.08

IEC No. 0212025627

MECHANICAL SPREADER



High functionality, smooth operations and low maintenance are some of the features that distinguish our Mechanical Spreaders from others in the market. Our company is one of the leading Manufacturers and Suppliers of a wide range of Mechanical Spreaders. Available with us in varied specifications, our Mechanical Spreaders are customizable as well according to power and capacity requirements. Buyers can contact us anytime of the year.

GRIT Refiring System



It was when we backed ourselves by a sound infrastructure and expertise in the domain; we plunged into making available **GRIT Refiring System** of the best grade. We are one of the acknowledged Manufacturers and Suppliers of GRIT Refiring System in West Bengal. We are a quality-endorsed organization that is reckoned for doling out only quality-tested products. And customization is another area in which we conquer so as to exceed the expectations of our clients.

Inspection Door (227 x 76 mm)

Our expertise in manufacturing **Inspection Door (227 x 76 mm)**. We are well-recognized Inspection Door Manufacturer and Supplier in Howrah, West Bengal. The array of Inspection Door offered by us is available in different specifications. We fabricate Inspection Door according as per the industry set norms. Our Inspection Door is available at highly competitive price.

About Inspection Door



Sizes available : 227 x 76 mm

- Raw Material Used according to IS: 3355-1974 GR.2 Type-A.
- Heat resistant C.I. casting

Specifications

- 458mm x 382mm
- 450 mm sq.
- 229 x 76mm
- 227 x 76mm
- 234 x 130 mm

Finish & Packaging

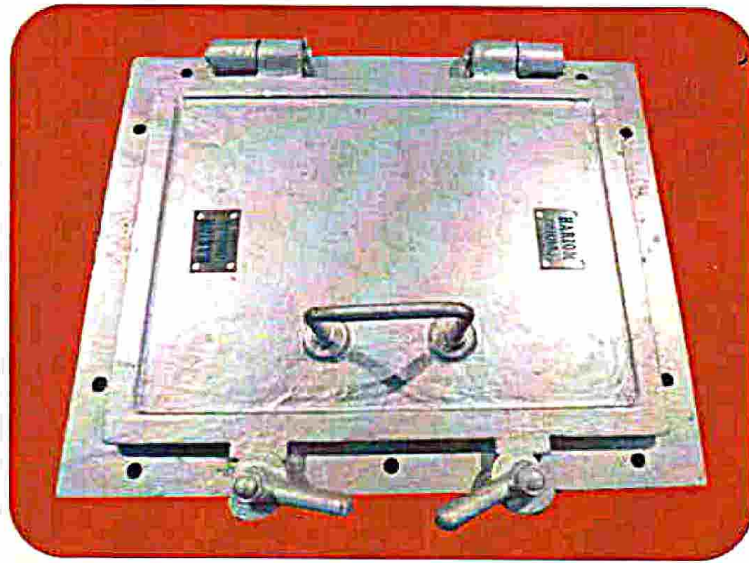
- Heat resistant aluminum paint and Sea-worthy packing for export

Specifications :

- 458mm x 382mm
- 450 mm sq.
- 229 x 76mm
- 227 x 76mm
- 234 x 130 mm

Finish & packaging : Heat resistant aluminum paint and Sea-worthy packing for export

Furnace Doors



Catering to the requirements of different industries, we offer precision-engineered **Furnace Doors** to the clients. Our Cast Furnace Doors are made from finest materials that ensure their sturdiness, resistance to high furnace temperatures and excellent durability. Further, the specifically designed Furnace Doors that we offer are available in different specifications. We have acquired wide acclaim for making strong and cost-effective Cast Iron Furnace Doors. Owing to such appreciation, we have become the most preferred Furnace Doors Manufacturer and Supplier in Howrah, West Bengal.

About Furnace Doors

- Heat resistant C.I. casting
- Raw Material Used according to IS: 3355-1974 GR.2 Type-A
- Sizes available** : 615 x 458 mm

Specifications

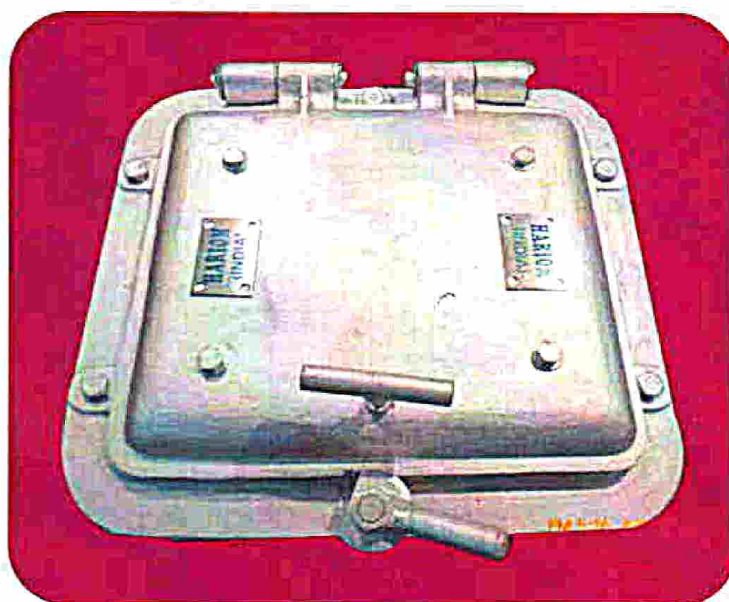
- 458mm x 382mm
- 450 mm sq.
- 229 x 76mm
- 227 x 76mm
- 234 x 130 mm

Finish & Packaging

- Heat resistant aluminum paint and Sea-worthy packing for export

Access Doors

Hariom Foundryman Enterprise are involved as **Access Doors** Manufacturer and Supplier in Howrah, West Bengal. Buyers can avail from us the precisely designed Cast Iron Access Doors. In the making of Access Doors, we use the highest quality materials, which ensure their durability and strength. The wide assortment of Access Doors that we offer is available in different sizes and specifications. Our Access Doors are available at very reasonable prices throughout the country.



About Oval Access Doors

- ❑ **Sizes Available** : 458mm x 382mm
- ❑ Raw Material Used according to IS: 3355-1974 GR.2 Type-A
- ❑ Heat resistant casting

Specifications

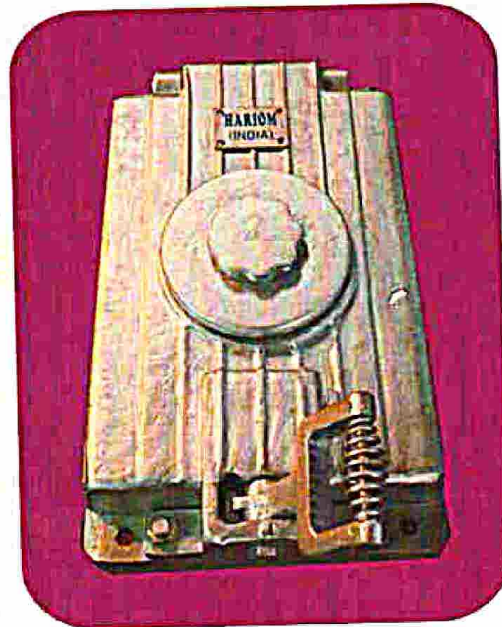
- ❑ 458mm x 382mm
- ❑ 450 mm sq.
- ❑ 229 x 76mm
- ❑ 227 x 76mm
- ❑ 234 x 130 mm

Finish & Packaging

- ❑ Heat resistant aluminum paint and Sea-worthy packing for export

Fire Doors

Hariom Foundryman Enterprise are a trusted Fire Doors Manufacturer and Supplier in Howrah, West Bengal. Fireproof Doors, also known as **Inspection Doors**, are required in several industries. We design and fabricate Fire Doors from superior grade materials and according to the industry set norms. In addition, we utilize modern methodologies for the production of Fire Doors. Our Fire Doors are acclaimed for the precision-engineered make and sturdiness. The gamut of Fire Doors that we offer is available in different specifications. Clients can avail Fire Doors from us at the highly competitive prices. we offers top quality name fireproof doors manufacturers.



About Fire Doors

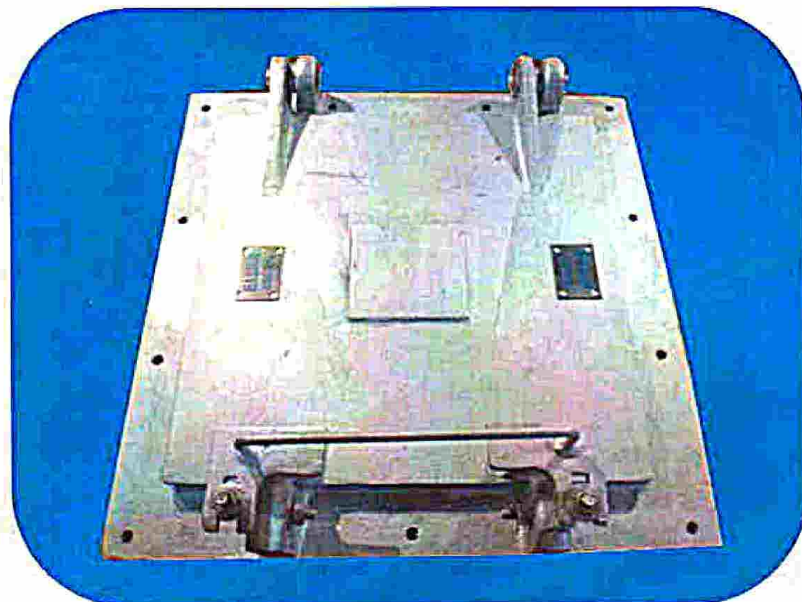
- ❑ **Sizes Available :**
- ❑ 580mm x 356 mm
- ❑ **Raw Material Used according to IS : 3355-1974 GR-2 Type A**
- ❑ Heat resistant alloy casting

Specifications :

- ❑ 458mm x 382mm
- ❑ 450 mm sq.
- ❑ 229 x 76mm
- ❑ 227 x 76mm
- ❑ 234 x 130 mm

Finish & Packaging : Heat resistant aluminum paint and Sea-worthy packing for export

Manhole Doors



Hariom Foundryman Enterprise offer precision-engineered **Manhole Doors**, Manhole Covers which are required in a number of industries. The specifically designed Manhole Doors and Cast Iron Manhole Covers that we offer are available in different specifications. Our Manhole Doors are made from finest materials ensuring their longevity. We have acquired wide appreciation for making strong and cost-effective Manhole Doors or covers. Owing to such appreciation, we have enlisted ourselves as the most sought-after Manhole Doors Manufacturer and Supplier in Howrah, West Bengal.

About Manhole Doors

- Sizes Available** : 450 X 450 mm sq.
- Raw Material Used according to IS 210 GR. - 20
- Grey Casting

Specifications

- 730mm x 730mm
- 450 mm sq.
- 410 x 410mm
- 350 / 250/ 275/ 200/ 150

Finish & Packaging

- Heat resistant aluminum paint and Sea-worthy packing for export

Rotor Assembly



Rotor Assembly is used in coal feeding system. We are renowned Automatic **Rotor Assembly** Manufacturer and Supplier in Howrah, West Bengal. We design and manufacture Rotor Assembly by using the finest Steel and other materials. In addition, we utilize the latest technologies for the fabrication of Rotor Assembly. Our Rotor Assembly is acclaimed for the precision-engineered make and durability. The range of Rotor Assembly that we offer is available in different specifications.

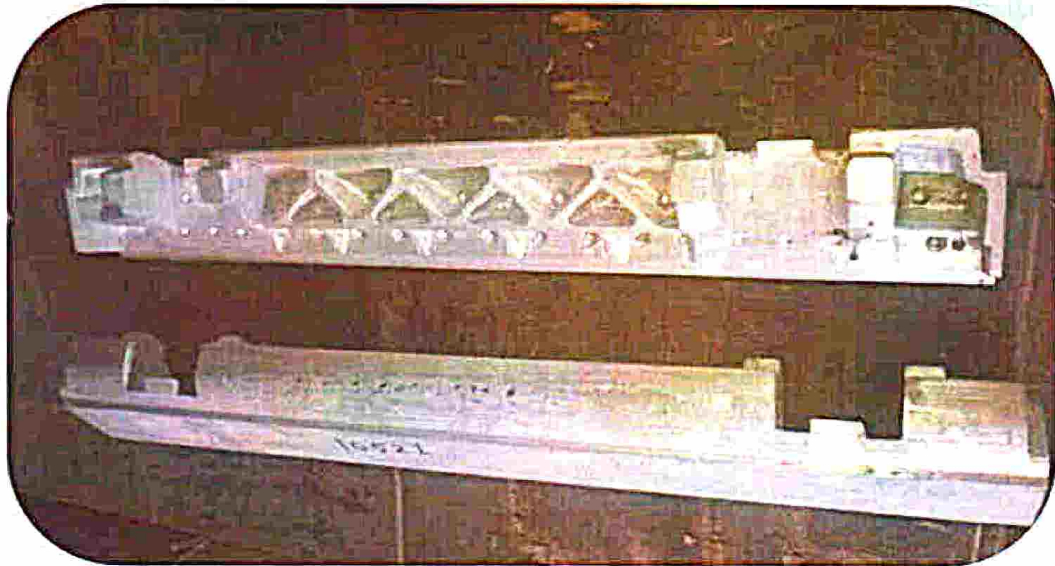
About Rotor Assembly

- ❑ Available in standard sizes
- ❑ Attached with mechanical spreader
- ❑ Raw Material Used according to IS 276-1974
- ❑ Dynamically balanced

Finish & Packaging

Red oxide primer and sea-worthy packing

Grate Bar

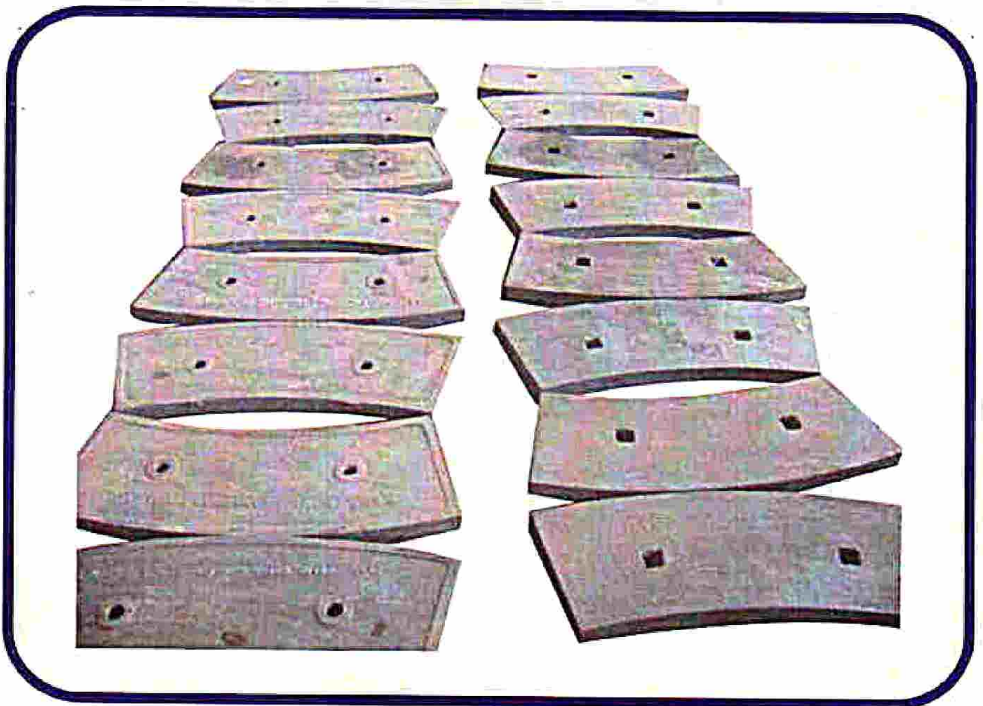
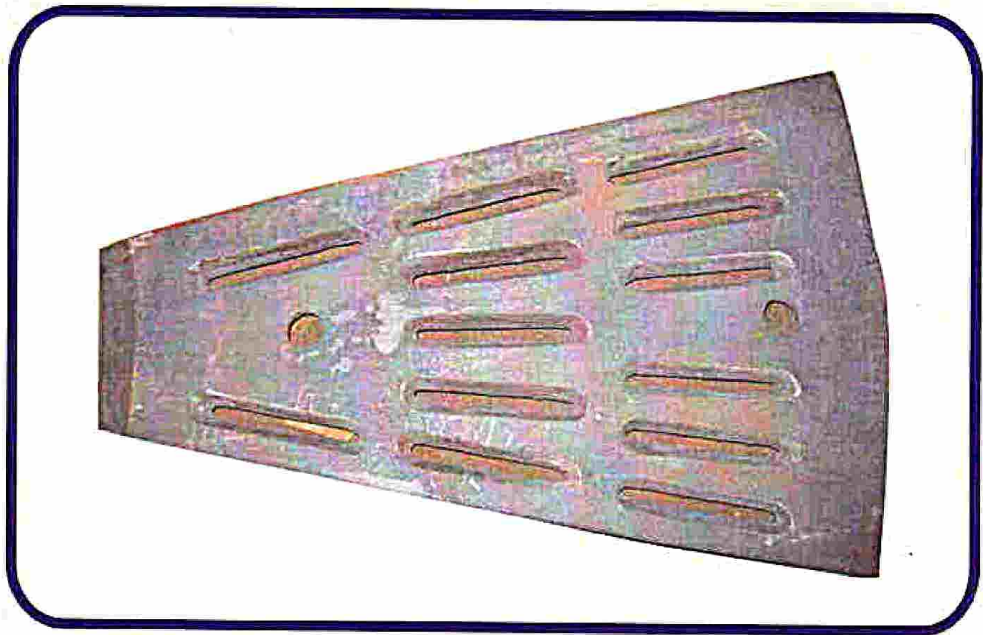


Manufacturing and supplying **Grate Bar** that is highly appreciated by several industry professionals. We are instrumental in offering durable, highly efficient, easy to handle and rough and tough to use Grate Bars. We deal in Grate Bar that is widely used in stoker . We efficiently manufacture the Grate Bar using optimum raw material, under the supervision of experts; thus making the 100% corrosion resistant Bars reliable.

Features :

- Rugged construction
- High functional efficiency
- Rough and tough to use
- Optimum strength
- High efficiency

Liner for Cement Plant

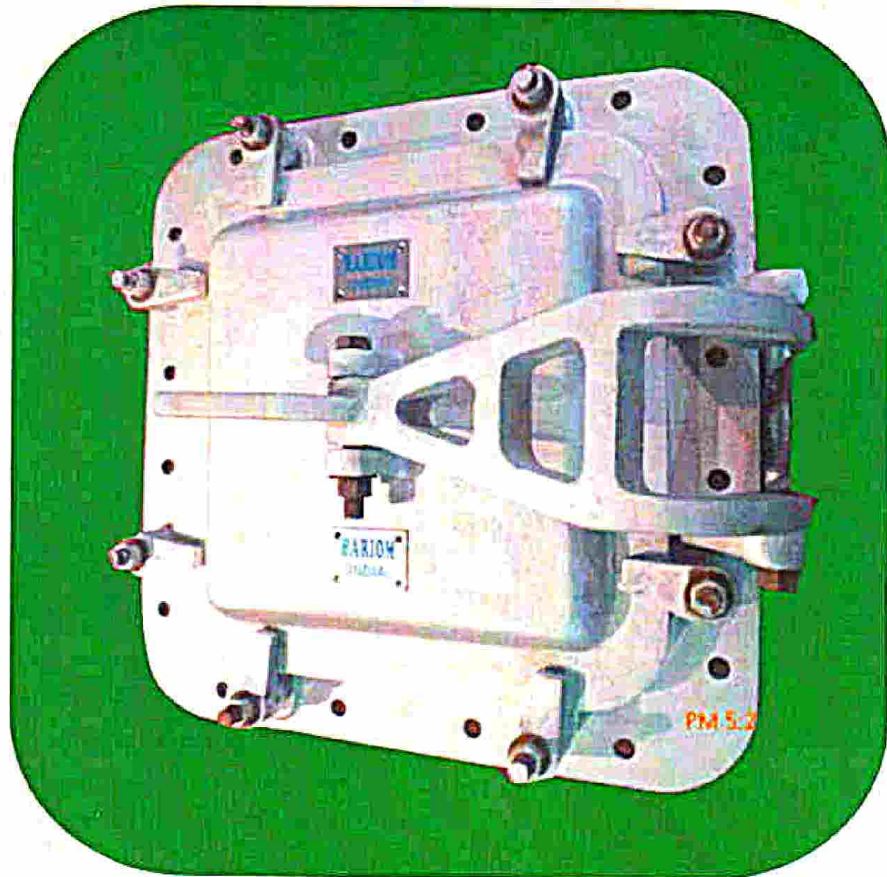


EXPLOSION DOOR



West Bengal (Howrah)-based Manufacturer and Supplier of **Explosion Door**; we are one of the most reliable and genuine names in this domain. We offer the customers a tested and certified range of Explosion Door; manufactured keeping the varying demands of customers in mind. We have been catering to various industries by offering Boiler Door; designed and developed by the professionals. We are capable of entertaining bulk orders of customers from all over India and abroad.

Access Door 450mm X 450mm



We are far-famed for the excellent and quality assured range of **Access Door**. We deal in Access Door manufactured as per the latest market demands. The offered Boiler Door are manufactured using high grade raw material; under the stringent supervision of adroit professionals. We have adopted cutting edge technology thus we make sure that the Access Door meet the international standards.

OVAL ACCESS DOOR



Hariom Foundryman Enterprise are involved as **Oval Access Doors** Manufacturer and Supplier in Howrah, West Bengal. Buyers can avail from us the precisely designed Cast Iron Oval Access Doors. In the making of Oval Access Doors, we use the highest quality materials, which ensure their durability and strength. The wide assortment of Oval Access Doors that we offer is available in different sizes and specifications. Our Oval Access Doors are available at very reasonable prices throughout the country.

About Oval Access Doors

Sizes Available : 458mm x 382mm

- Raw Material Used according to IS: 3355-1974 GR.2 Type-A
- Heat resistant casting

Specifications

458mm x 382mm

- 450 mm sq.
- 229 x 76mm
- 227 x 76mm
- 234 x 130 mm

RACK AND PINION GATE



We are West Bengal (Howrah)-based Manufacturer and Supplier of **Rack Pinion Gate**. We are ranked among the most sought after names in this domain; offering high grade and durable Rack Pinion Gate. We offer the Rack Pinion Gate that is manufactured using sophisticated technology and latest machines. We are well-known for the Rack Pinion Gate that is 100% designed, developed and tested by the adroit professionals.

INSPECTION DOOR 229 X 76



We settle the demand for **Industrial Boiler Inspection Door**, from anywhere across the country, with the best-in-class ones. We are reputed to be among the leading Manufacturers and Suppliers of Industrial Boiler Inspection Door in West Bengal. We make available Industrial Boiler Inspection Door of (229 X 76 mm) specification; however, we can grace our clients with tailored products as well. Count on us!

Heat resistant aluminum paint and Sea-worthy packing for export

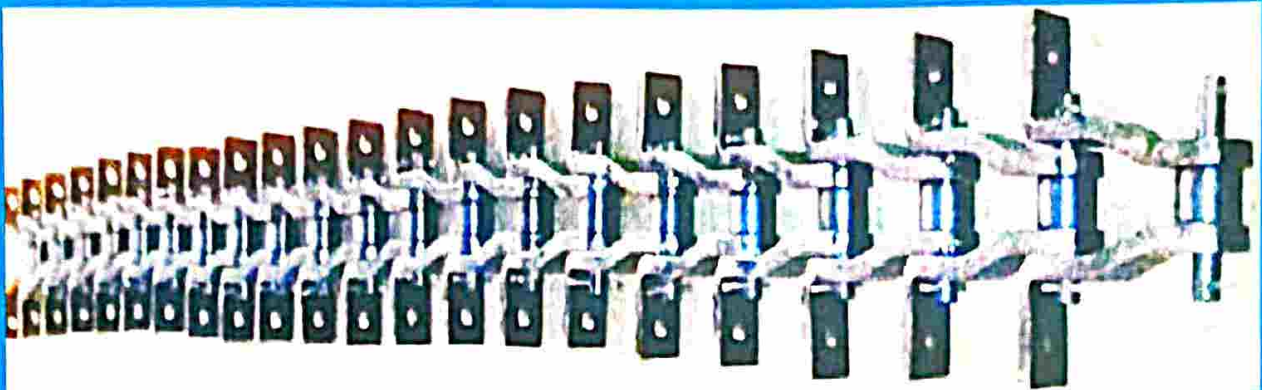
CIRCULAR DAMPER



SHAFT WITH IDLER AND SPROCKET FOR



GRATE BAR CHAIN ASSLY.

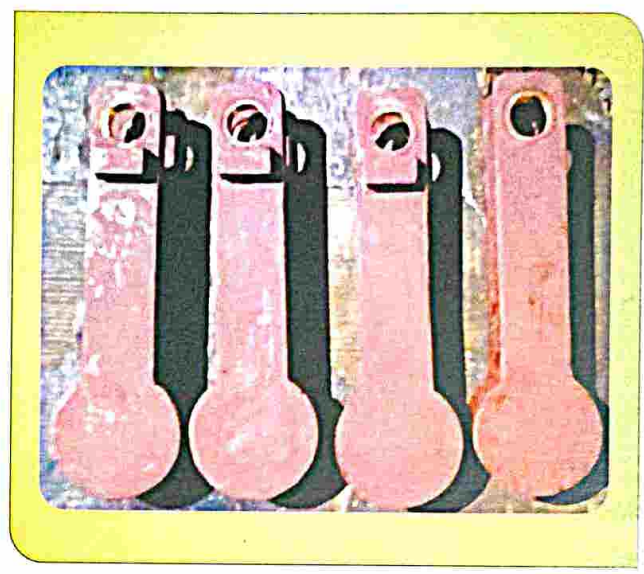
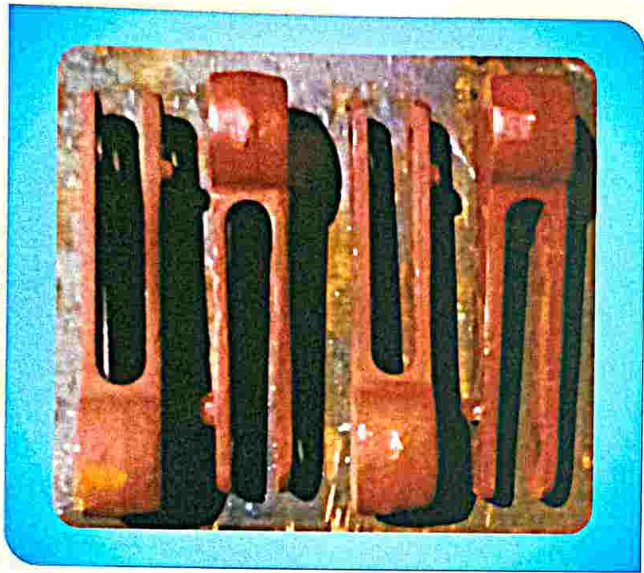


Manufactureing And Supplying **Grate Bar Chain Assembly** That Is Highly Appreciated By Several Industry Professionals. We Are Instrumental In Offering Durable, Highly Efficient , Easy To Handle And Rough And Tough To Use Grate Bars. We Deal In Grate Bar That Is Widely Used In Stoker . We Efficiently Manufacture The **Grate Bar Chain Assembly** Using Optimum Raw Material , Under The Supervision Of Exprts : Thus The 100 % Corrosion Resistant Bars Reliable.

FEATURES :

- ❑ RUGGED CONSTRUCTION
- ❑ HIGH FUNCTIONAL EFFICIENCY
- ❑ ROUGH AND TOUGH TO USE
- ❑ OPTIMUM STRENGTH

HAMMER



Hariom foundryman enterprise offer precision – engineered **Hammers** which are required in a all cement plant. Our **Hammers** are made from finest materials ensuring longevity. We have acquired wide experience for making strong and cost effective **Hammers**. owing to our dedication ,we have enlisted as the most sought – after **Hammer** manufacturer and supplier in howrah , West Bengal. buyers can contact any time of the year.

About hammers :

- **Raw material** : en 24 , manganese steel

Stroker Assembly



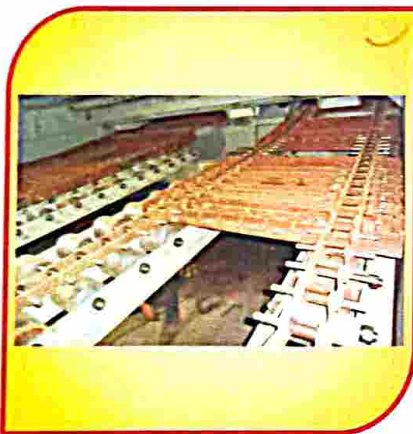
Stroker Assembly



Stroker Assembly



Grate Bar with Chain Assly



Chain assly with gratebar



Grate Bar Chain Assembly



Skid Bar Assembly



Rear Seal Plate Assembly



Stroker Assly



Stroker Assembly



Skid Ramp With Centre Bearing In Stroker



Stroker Assembly



Stroker Assembly



Stroker Assembly



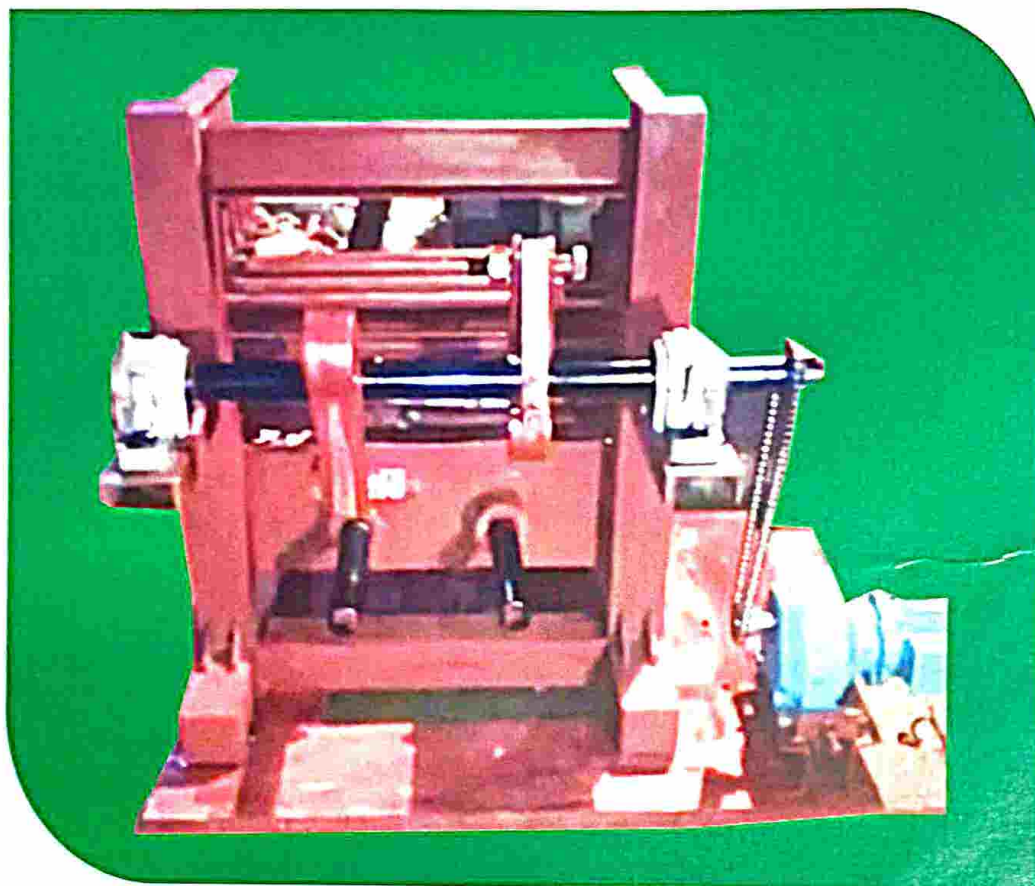
Stroker Part Assembly



Stroker Part Assly.



HAMMERING SYSTEM



High functionality, smooth operations and low maintenance are some of the features that distinguish our **Hammering System** from others in the market. Our company is one of the leading Manufacturers and Suppliers of a wide range of **Hammering System**. Available with us in varied specifications, our **Hammering System** are customizable as well according to power and capacity requirements. Buyers can contact us anytime of the year.